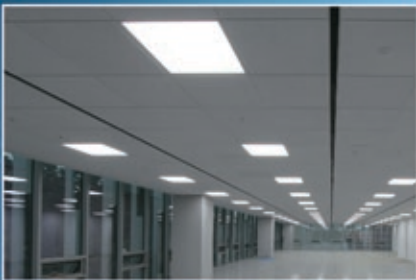


# KALINGA<sup>®</sup> PREMIUM

LIGHTING UP INDIA FOR OVER 60 YEARS



PRODUCT CATALOGUE



MODERN LED LIGHTING  
TECHNOLOGY

IS : 15111  
  
PART - 1&2  
CM/L : 9581394

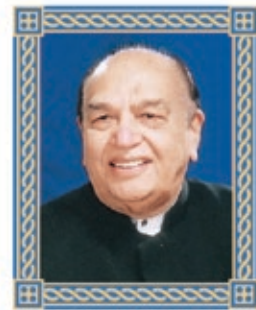




LIGHTING UP INDIA FOR OVER 60 YEARS



MODERN LED LIGHTING



## From the desk of the Chairman

I take this opportunity to put forth my views regarding our organisation, its objectives and the path that it wants to take to achieve them.

Founded and started in the year 1955, Kalinga has over the years earned not only good orders from esteemed clients but also their love, respect and admiration. This has not been easy to achieve in this competitive age. It has come through single-minded dedication and devotion to the cause named Kalinga. We have set various targets and goals for ourselves to achieve over the last 60 years but the basic principles have always remained the same. Adherence to laid down norms, consistent improvement in quality and capacity and regular upgradation in skills and competency levels of all personnel through regular training have been the cornerstone of our success story.

However, this success could not have been achieved without your support and loyalty for which we all at Kalinga will remain forever obliged to you. Yes, our customers, dealers and distributors are an integral part of our plan to achieve market leadership. Friends, while thanking and acknowledging your efforts and support, I wish to emphasize that we have just come a small way and the journey is very long. We have to ensure that we do not let petty matters to create hurdles in our path.

Lastly, I wish to remind you that it was the battle of Kalinga, which made a mighty warrior like Ashoka throw down his arms forever and become a monk. The same will be the fate of all our competitors, this is my sincere assurance to you.

Wishing you all the very best in life and business.

*Bal Raj Sethi*

# LED FLAT PANEL

Add style to any room with minimal effort. Kalinga Premium LED flat panels brings you easy-to-install, round and square aperture downlights that will bring a sophisticated look to any ceiling. Available in square and round apertures, Kalinga Premium LED panels are highly energy efficient and is a benchmark product in the industry.



## LED Flat Panel Lights



## Specifications

Item No.	Power (W)	Size (mm)	Packing	M.R.P.
KP-FP103	3w	D:90 H:22 Cut:70	50	₹ 690.00
KP-FP106	6w	D:120 H:22 Cut:100	40	₹ 930.00
KP-FP112	12w	D:170 H:22 Cut:150	30	₹ 1545.00
KP-FP118	18w	D:225 H:22 Cut:200	20	₹ 1990.00

## APPLICATIONS

- DOMESTIC LIGHTING
- PUBLIC LIGHTING
- DECORATIONS
- AUDITORIUM
- MULTIPLEX
- LECTURE ROOM
- CONFERENCE ROOM
- HOTELS
- WORSHIP SPACE
- OFFICE
- STADIUMS
- AIRPORTS
- STUDIO
- HOSPITALS



SQUARE  
LED PANEL



ROUND LED PANEL

## LED FLAT PANEL LIGHTS

Input Voltage	AC 85-260V
Beam Angle	120 Degree
Color Temperature	3000-6500k
Material	Aluminum
Luminous Efficiency	110 LM/W
Average Color Index	83

## Benefits

- IDEAL FOR GENERAL / TASK LIGHTING
- WIDE OPERATING VOLTAGE RANGE
- WITHSTAND UPTO 360V
- MERCURY-FREE & ECO-FRIENDLY
- LOW HEAT EMISSION
- HIGHLY ENERGY EFFICIENT
- HIGH POWER FACTOR (PF  $\geq$  0.92)



# LED SURFACE PANELS

Kalinga Premium LED surface panels are a slim line and discreet surface mount fitting designed to blend in with your ceiling. Optimum design of heat dissipation structure ensures a long life while meeting high aesthetic standards.



ROUND SURFACE PANEL



SQUARE SURFACE PANEL

Item No.	Power (W)	Size (mm)	Packing	M.R.P.
KP-SP112	12w	D:170 H:40	30	₹ 1750.00
KP-SP118	18w	D:225 H:40	20	₹ 2380.00

## LED SURFACE PANEL LIGHTS

Input Voltage	AC 85-260V
Beam Angle	120 Degree
Color Temperature	3000-6500k
Material	Aluminium
Luminous Efficiency	110 LM/W
Average Color Index	83

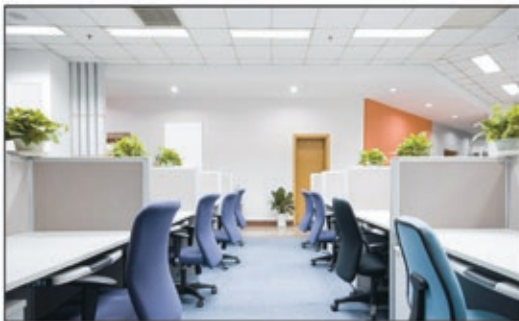
## Benefits

- IDEAL FOR BASEMENTS & FIXED CEILINGS
- WIDE OPERATING VOLTAGE RANGE
- WITHSTAND UPTO 360V
- MERCURY-FREE & ECO-FRIENDLY
- LOW HEAT EMISSION
- HIGHLY ENERGY EFFICIENT
- HIGH POWER FACTOR (PF ≥ 0.92)



## LED INDUSTRIAL PANELS

Kalinga Premium LED industrial panels are ideal for usage in commercial operations. Our slim line and attractive industrial panel are designed to blend in with corporate culture. Additional to providing a sophisticated look they are build for elonged usage with high efficiency of lighting emitted.



Item No.	Power (W)	Size (feet)	Packing	M.R.P.
KP-IP124	24w	1' X 1'	1	₹ 3590.00
KP-IP136	36w	2' X 2'	1	₹ 8990.00
KP-IP145	45w	2' X 2'	1	₹ 9950.00

### LED INDUSTRIAL PANEL LIGHTS

Input Voltage	AC 85-260V
Beam Angle	120 Degree
Color Temperature	3000-6500k
Material	Aluminium
Luminous Efficiency	110 LM/W
Average Color Index	83

### Benefits

- IDEAL FOR OFFICES & COMMERCIAL OPERATIONS
- WIDE OPERATING VOLTAGE RANGE
- WITHSTAND UPTO 360V
- MERCURY-FREE & ECO-FRIENDLY
- LOW HEAT EMISSION
- HIGHLY ENERGY EFFICIENT
- HIGH POWER FACTOR (PF ≥ 0.92)



# LED BULBS

Kalinga Premium LED Bulbs are amongst the first to get their product BIS approved. With the usage of best available raw-material and an atomized process, we have created a prodigy in the luminaire industry. The result of this technology brings you an attractive design and the highest performing bulb in the industry. Having high lumens and high power factor they enlighten your space. Unlike other bulbs in the market that fade away, Kalinga Premium bulbs are durable and perform for much longer.

## Benefits

- IDEAL FOR BASEMENTS & FIXED CEILINGS
- WIDE OPERATING VOLTAGE RANGE
- WITHSTAND UPTO 360V
- MERCURY-FREE & ECO-FRIENDLY
- LOW HEAT EMISSION
- HIGHLY ENERGY EFFICIENT
- HIGH POWER FACTOR (PF  $\geq$  0.92)



Power (W)	M.R.P.
5w	₹ 369.00
7w	₹ 499.00
9w	₹ 599.00
12w	₹ 659.00

- 1 - LED = 2 1/2 CFLS OR 25 INCANDESCENTS

An ENERGY STAR® qualified LED will last on average 25 years. Much longer than other bulbs!

\*Assumes bulbs are on for 3 hours a day.

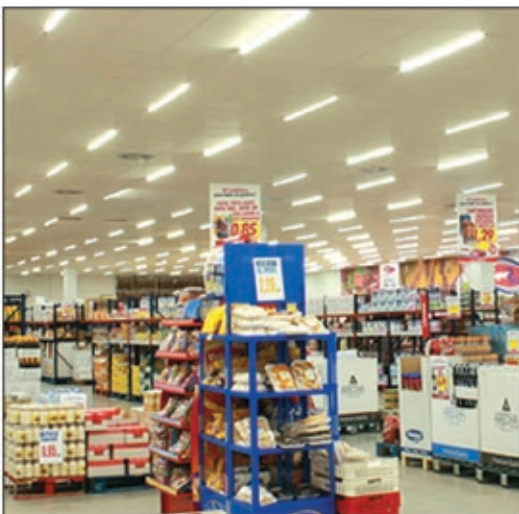


**KALINGA<sup>®</sup>**  
**PREMIUM**



# LED TUBE LIGHTS

Kalinga Premium T5 Batten are Slim, robust and non-corrosive. These Batten have an instant start. Providing Efficient light resulting in substantial savings in your house, offices or other areas. Kalinga Premium LED T5 Batten are FLICKER FREE and perform with a Power factor  $\geq 0.92$ .



## Benefits

- HEAVY DUTY ENERGY EFFICIENT PERFORMANCE
- HIGH POWER FACTOR
- SLIM AND ATTRACTIVE DESIGN
- NON CORROSIVE
- WIDE OPERATING RANGE
- FLICKER FREE

Length	M.R.P.
4 feet	₹ 1215.00
2 feet	₹ 890.00



LED TUBE LIGHT



# LED STREET LIGHTS

Kalinga Premium Street Luminaire is perfect for secondary roads and pathways. It sports a compact body, which offers a highly efficient lighting solution as compared to fluorescent and CFL street lights. They are completely maintenance free.

This is a versatile street light that can be used in various other outdoor applications. The compact size of our Outdoor LED design allows it to be used as an outdoor light for periphery lighting. It can be used in and around residential houses, offices, small and medium industries and gated communities.

Power (W)	M.R.P.
18w	₹ 2700.00
24w	₹ 3600.00
40w	₹ 6000.00
60w	₹ 9000.00
90w	₹ 13500.00
120w	₹ 18000.00

## Features

- HIGH GRADE POLYCARBONATE COVER WITH OPTICS DESIGN TO GIVE DISTRIBUTION
- SPECIALLY DESIGNED ELECTRONIC DRIVER WITH POWER FACTOR  $\geq 0.92$
- VOLTAGE RANGE VARIES FROM 100V TO 315V
- HIGH LUMEN OUTPUT FROM 1400 - 1600
- OUTDOOR PROTECTION (INGRESS PROTECTION OF IP 65)
- VARIOUS MOUNTING OPTIONS (POLE, WALL, POST TOP OPTIONS AVAILABLE)



LED STREET LIGHTS

**KALINGA<sup>®</sup>**  
**PREMIUM**

Manufacturing facility



All our Products are manufactured in India with state-of-the-art technology. Stringent quality checks in production ensure our LED Lights are much more durable and efficient than other brands available in the market.



LIGHTING UP INDIA for over 60 years





## KALINGA PREMIUM GROUP

The company has achieved the 60th year Diamond Jubilee mark & we are all proud to have served the nation all these years by lighting a lamp in almost all corners of India.

**CORPORATE OFFICE :**

**KALINGA TRADE LINKERS**

L-1, Shiv Shakti Plaza, Mahavir Enclave, New Delhi - 110 045

Customer Care No. : 91-011-45564460 | E-mail: kalingacables2004@yahoo.co.in



[www.kalingas.com](http://www.kalingas.com)